

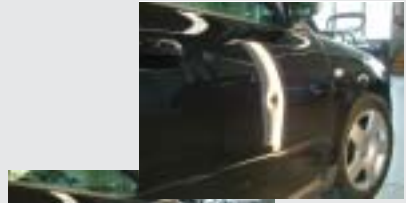
beulentechnik AG
SWITZERLAND

GLUE PULLER



Weissbadstr. 44 - CH - 9050 Appenzell - Switzerland
Tel.: +41 71 787 87 15 Fax: +41 55 410 66 57
www.beulentechnik.com

GLUE PULLER



The grid contains the following steps:

- 1. A white line of glue is applied to a dark car's body panel.
- 2. A hand uses a white cloth to wipe the surface around the glue line.
- 3. A hand uses a heat gun to warm the glue line.
- 4. A blue glue puller is positioned over the heated glue line.
- 5. A hand adjusts the blue glue puller to fit the curve of the body panel.
- 6. A hand presses a small metal pin into the glue puller.
- 7. The glue puller is held in place against the car's body panel.
- 8. A hand uses a hammer to tap the metal pin, pulling the glue puller away from the surface.
- 9. The final result shows the white glue line removed from the dark car's body panel.

